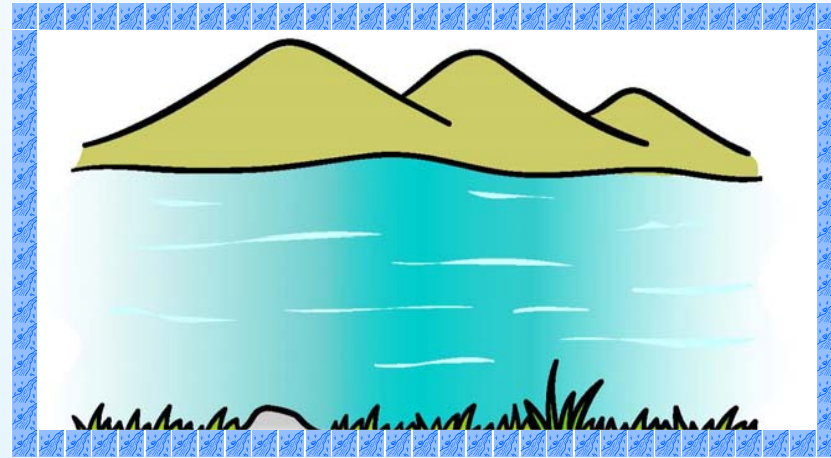




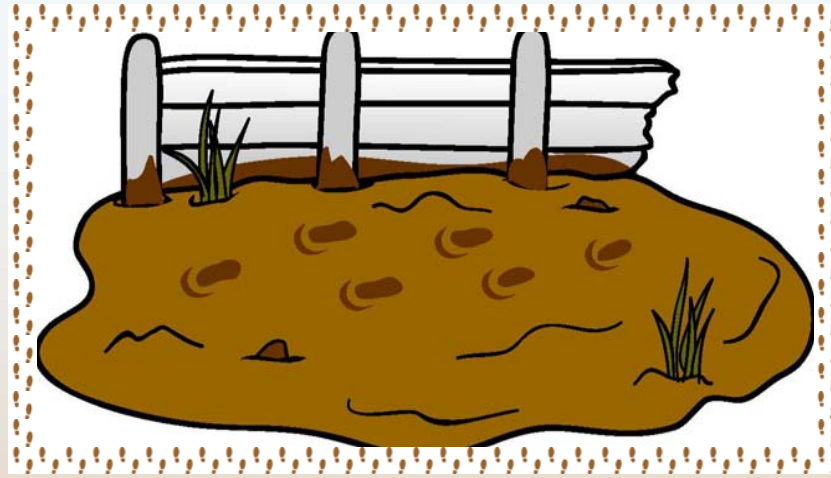
Long wavy grass

Swishy swashy!
Swishy swashy!
Swishy swashy!



A DEEP COLD RIVER

Splash splosh!
Splash splosh!
Splash splosh!



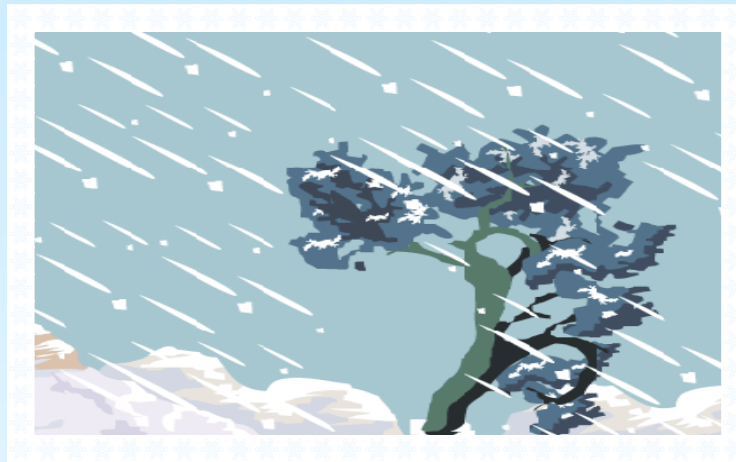
Thick oozy mud

Squelch squerch!
Squelch squerch!
Squelch squerch!



A big dark forest

Stumble trip!
Stumble trip!
Stumble trip!

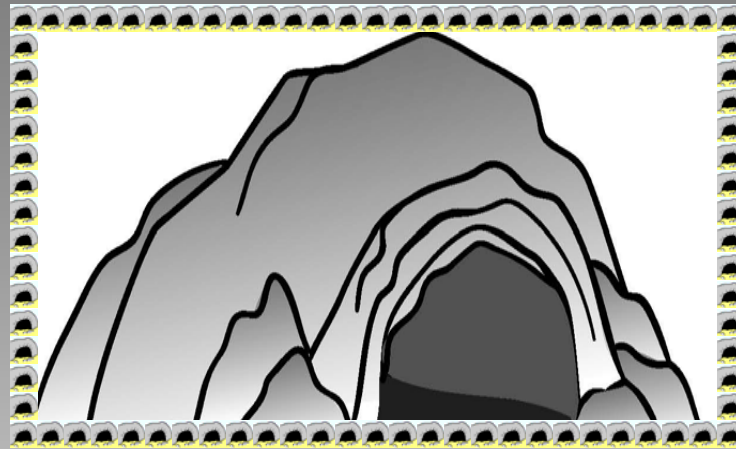


A swirling whirling snowstorm

Hoooo woooo!

Hoooo woooo!

Hoooo woooo!



A narrow gloomy cave

Tiptoe!
Tiptoe!
Tiptoe!



IT'S A BEAR!!!!