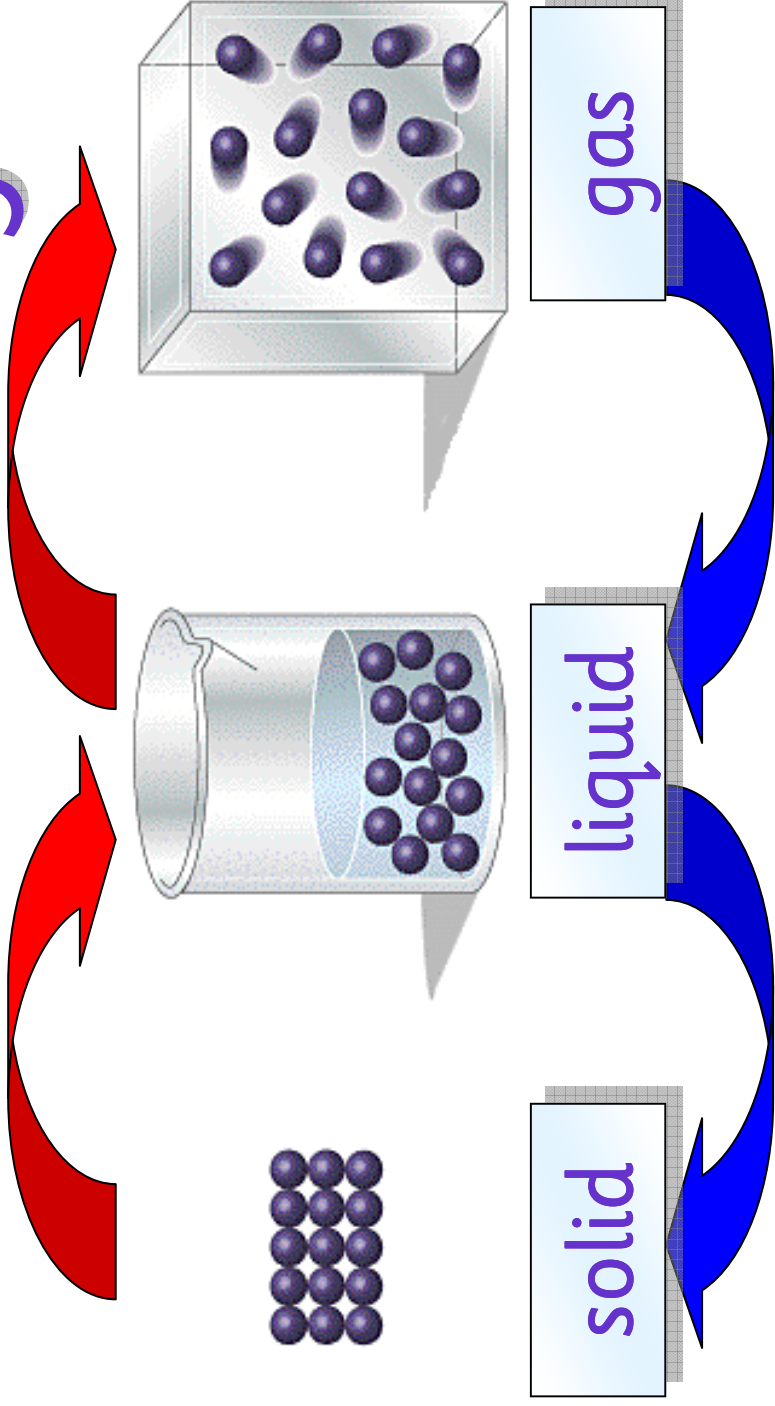


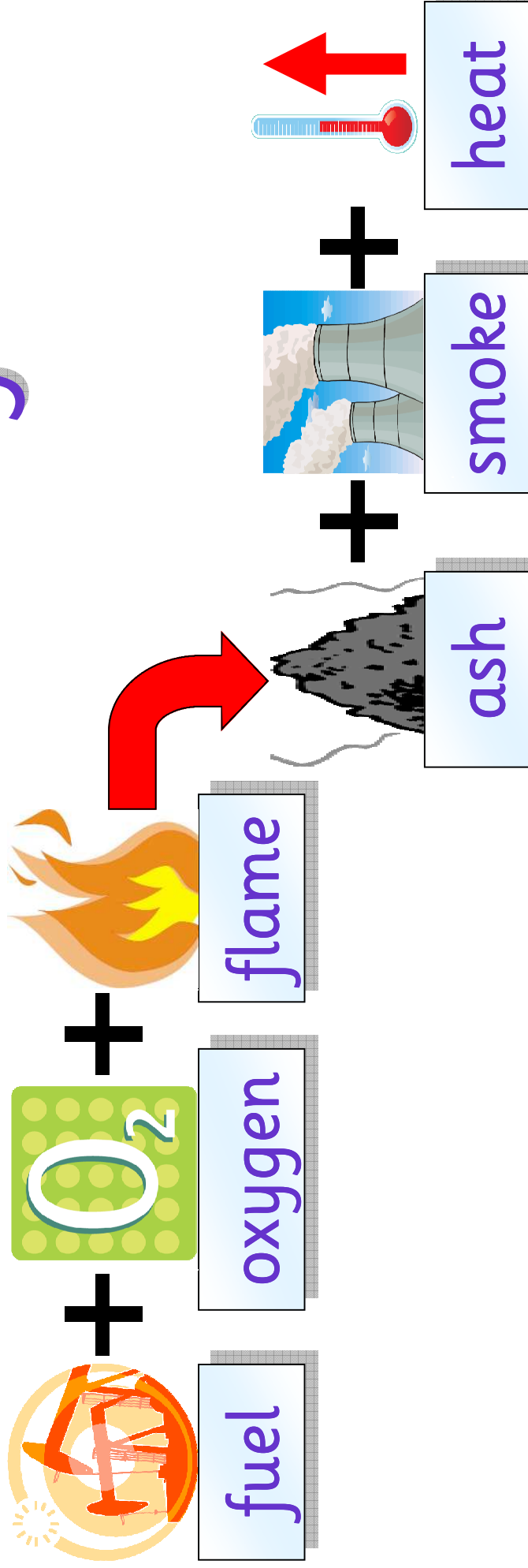
Reversible Changes



Physical change, from solid to liquid to gas
and back again, is a reversible change.



Irreversible Changes

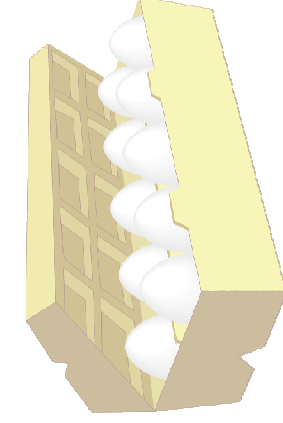


Any reaction, such as burning, that causes new substances to be formed is called a **Chemical Change**. These changes are **irreversible**.

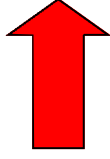
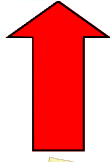


Cooking Eggs

Cooking eggs is an example of an irreversible change.

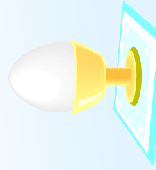


uncooked egg



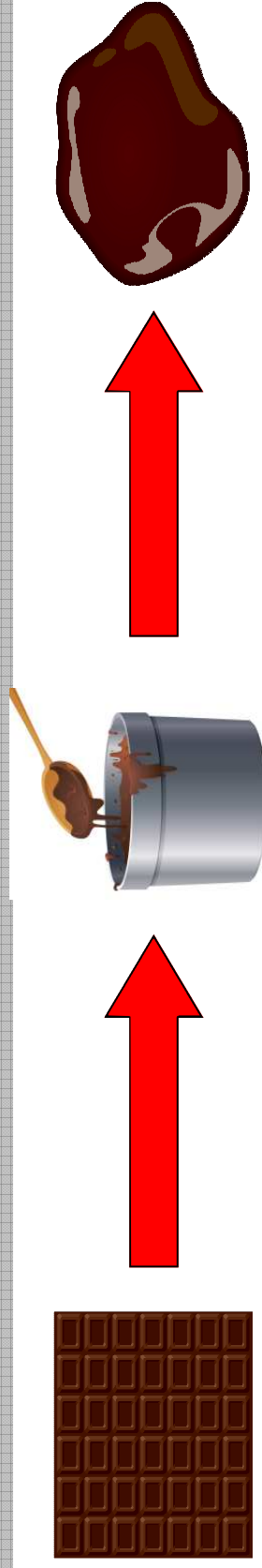
cooked egg

It does not matter how the egg is cooked, the change will always be irreversible.



Melting Chocolate

Melting chocolate is an example of a reversible change.



chocolate bar

melted chocolate

chocolate

The chocolate melts as it is heated then solidifies as it cools. This change is reversible.

